

This
is
JIPS

Joint IDP Profiling Service
Informing Solutions Together

WHAT IS PROFILING

Profiling is a **collaborative information-gathering process** that provides disaggregated and comparative data about displacement situations. Profiling results can:

- inform joint programming,
- be used to advocate and fundraise for an improved response,
- effectively inform policy development, and
- inform long-term solutions for the displaced.

The Joint IDP Profiling Service (JIPS) focuses on **protracted situations of internal displacement** (IDP situations). However, our approach and profiling methodologies can be adapted to suit a range of displacement situations, including different phases of displacement and different population groups.

Our work has a special focus on **urban settings, durable solutions** and supporting **policy/strategy development** initiatives, and facilitates common analysis generated through collaborative processes.

Depending on operational needs, profiling delivers **population data disaggregated** by age, sex, location and diversity. It can also provide thematic information analysis generated through the capture and processing of both quantitative and qualitative data. Importantly, as a collaborative process, **profiling achieves consensus** around the resulting analysis and recommendations, thereby increasing its ultimate impact on the population concerned.



JIPS mission, Florencia,
Colombia, 2013



JIPS mission, Hargeisa,
Somalia, 2014

WHO WE ARE

The Joint IDP Profiling Service is an **inter-agency service** established to help governments, humanitarian and development actors design and implement collaborative profiling exercises. We work primarily in situations of internal displacement and seek to provide tailored support and enhance profiling capacity wherever we go.

JIPS works to promote a culture of **evidence-based decision making in displacement situations**. Through collaborative profiling exercises, we believe a common analysis of the situation on the ground can facilitate coordination and improve joint response.

We pride ourselves also on working through partnerships at the global, regional and national levels. Through **building partnerships**, JIPS believes the impact and outreach of our work increases, resources are better spent through identifying synergies and common priorities and, ultimately, the quality of profiling improves.

JIPS' partners include:

- Operational NGOs and UN agencies
- Academic/technical institutions
- Information management support projects
- Humanitarian clusters
- Policy/advocacy organisations
- National statistical offices

OUR EXECUTIVE COMMITTEE

JIPS is supervised by an **Executive Committee** composed of the Danish Refugee Council (DRC), the International Rescue Committee (IRC), the Internal Displacement Monitoring Centre (IDMC), the Norwegian Refugee Council (NRC), the Office of the Special Rapporteur for the Human Rights of IDPs and the United Nations High Commissioner for Refugees (UNHCR).

The Executive Committee supports the work of JIPS by overseeing the development and implementation of the Service's multi-year strategy and by actively **advocating for the positive impact of profiling** in displacement situations and disseminating information about the services JIPS can provide. Executive Committee members, which together make up the inter-agency service, also undertake fundraising for JIPS.



FIELD SUPPORT AND PROFILING ADVICE

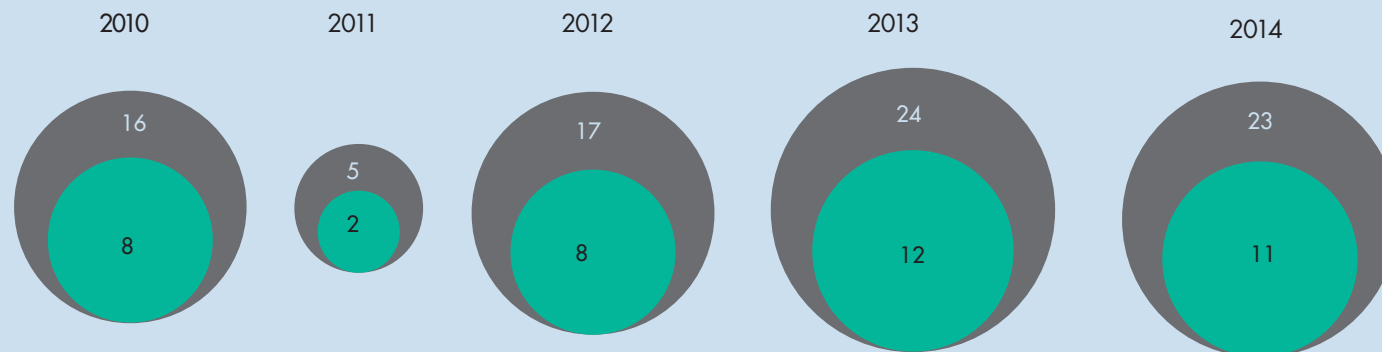
JIPS' primary activity is to provide support to partners around the world to design and implement collaborative profiling processes. Whether new to profiling or already in the midst of an exercise, [government, humanitarian or development partners](#) are encouraged to contact our team for support (info@jips.org).

Provided both on-site and remotely, we seek to [tailor our support to the needs on the ground](#). Working with a capacity building lens, we try to avoid substitution and prefer to support locally owned profiling exercises that generate impactful and agreed-upon data.

JIPS' field support can include:

- Strategic thinking to help identify the need and feasibility of profiling
- Coordination and project design to secure partnerships and set common objectives
- Technical support to develop methodology and profiling tools
- Operational support for training and data collection activities
- Coordination and technical support to analysis, reporting and validation of findings

REQUESTS RECEIVED AND SUPPORT PROVIDED 2010-2014

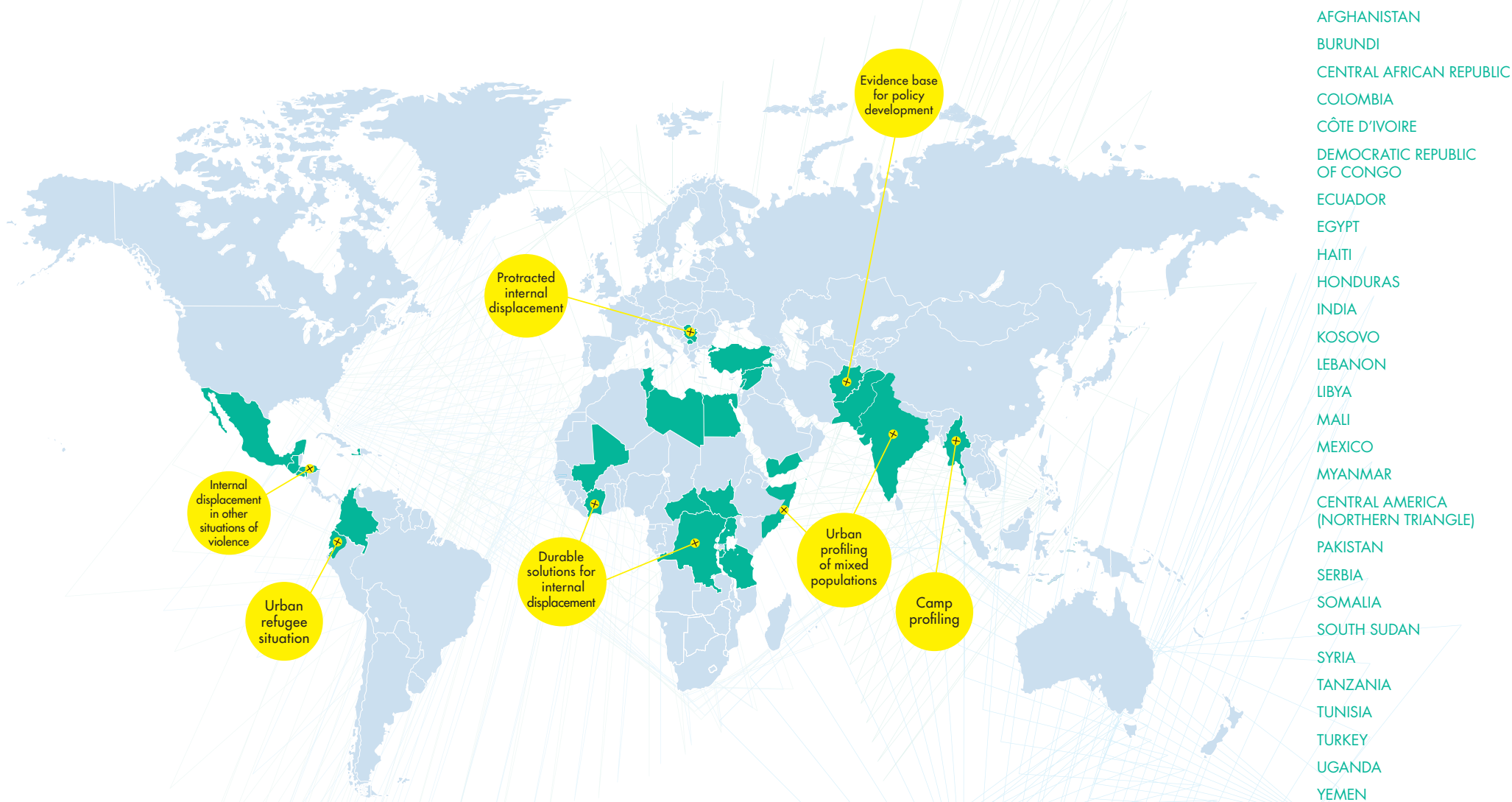


—
Between 2010 and 2014, JIPS received more than 80 requests for profiling support. Out of these, over 40 exercises have been successfully supported in displacement contexts around the world.

• Requests for support received (counted in year support is needed)

• Requests supported by JIPS (multi-year support projects only counted in the year support was initiated)

OUR SUPPORT 2010-2014



TRAINING AND CAPACITY BUILDING

Training and capacity building is a key feature of all JIPS' activities. As every field operation has different profiling capacity levels, **we tailor our training packages** according to an analysis of the training needs in country. **Capacity building** through on-the-job learning is also integrated into our field support work.

At the global and regional levels, **we regularly organise our flagship Profiling Coordination Training (PCT)** with the aim of enhancing the global capacity to undertake profiling exercises in displacement situations. JIPS manages a database of profiling coordinators to further strengthen this effort.

We also mainstream profiling good practice into relevant trainings organised by our partners on subjects as varied as policy development, protection and information management.



Profiling Coordination Training, 2014

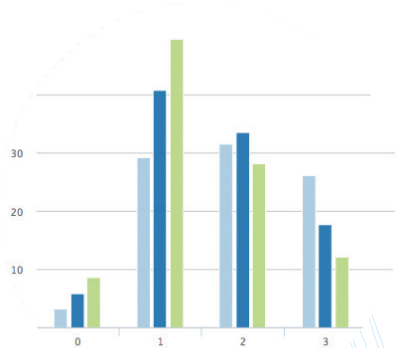


Profiling Coordination Training, 2015

TOOLS AND GUIDANCE

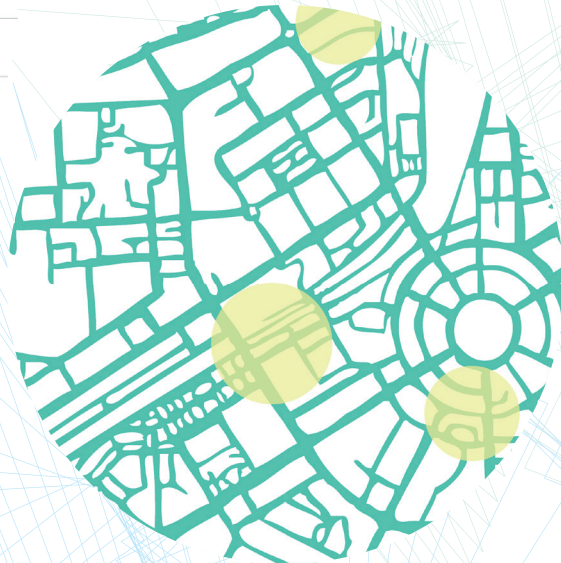
JIPS continually works to consolidate its profiling experience to **inform the development of tools and guidance** at the global level. Our tools aim to support colleagues around the world during all stages of designing or conducting a profiling exercise.

To date, **JIPS has developed three online toolkits**: the *Profiling and Assessment Resource Kit*, *JIPS Essential Toolkit*, and the *Dynamic Analysis and Reporting Tool*.



Visualisations from our tools

We also produced specialist guidance on profiling in urban settings: the *Guidance for Profiling Urban Displacement Situations*, highlighting challenges and outlining best practices for profiling exercises in urban areas.



JIPS Essential Toolkit (JET)

jet.jips.org

A compilation of generic tools and guides that users can browse for assistance, inspiration and adaptation for all stages of a profiling exercise.



Dynamic Analysis and Reporting Tool (DART)

dart.jips.org

Our online data management system that allows users to collaboratively explore, analyse and report on displacement data collected through profiling exercises.



Profiling and Assessment Resource Kit (PARK)

parkdatabase.org

An online database where users can access and share documents, presentations, tools and guidelines on profiling and assessment activities (developed with ACAPS).

ADVOCACY AND COMMUNICATIONS

JIPS is dedicated to promoting good practice in profiling displacement situations. [Advocacy for profiling is at the heart of our operations](#) and we work hard to spread awareness of how profiling data can strengthen collaborative response and [inform solutions to situations of displacement](#).

JIPS' advocacy and communications activities are channeled through our [website](#) and other online channels including a regular newsletter and social media. We also seek to participate in relevant events and organise our own presentations and conferences.

At the global level, JIPS works closely with partners to [foster a Community of Practice](#) to address challenges and discuss issues related to profiling and assessment practice. At the national level, we support advocacy efforts as part of a profiling process to help secure partnerships and increase the value and impact of profiling.

OUR DONORS

Since it was established in 2009, JIPS has been [supported by a wide range of donors](#) through both field and global level collaboration. Past JIPS' donors have included AusAid, ECHO, NRC-IDMC. Our current donors are: BPRM, DANIDA, DRC, NMFA, UNHCR and USAID OFDA. JIPS also integrates a cost recovery model into its modus operandi for some field support and capacity building activities.



COMMISSION EUROPÉENNE



www.jips.org



www.jips.org
info@jips.org

+41 22 552 22 77



JIPS_profiling



JointIDPProfiling



JIPS